



2017 – 2018 Monthly Financial Report

For the Month Ended October 31, 2017



Kelvin R. Adams PhD, Superintendent of Schools

Saint Louis Public Schools

801 N. 11th Street

St. Louis, MO 63101

(314) 231-3720

www.slps.org



Rick Sullivan



President and CEO

Darnetta Clinkscale



SAB Member

Richard K. Gaines



SAB Member



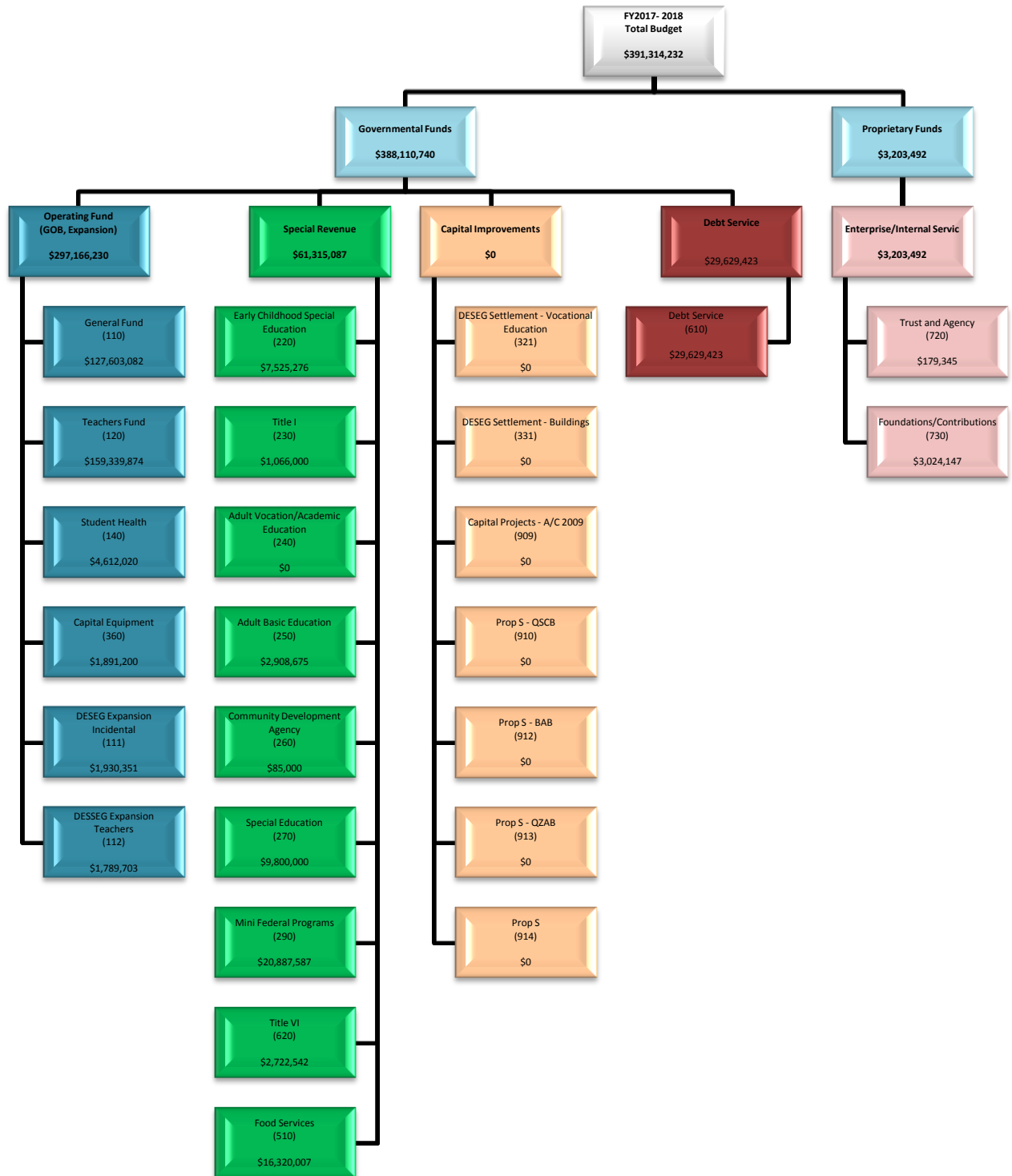
Kelvin R. Adams, PhD

Superintendent of Schools

801 North 11th Street • St. Louis, MO 63101 • (314) 231- 3720

Contents

SLPS Budget by Fund (all funds).....	1
SLPS YTD Budget to Actual by Fund (all funds).....	2
Balance Sheet – Governmental Funds.....	3
Statement of Revenue, Expenditures and Changes in Fund Balances – Governmental Funds.....	4



FY 2018
SLPS YTD Budget-to-Actual by Fund (all funds)
For The Period Ended October 31, 2017

FUND CODE	FUND DESCRIPTION	FY 2018 ADOPTED BUDGET	FY 2018 CURRENT BUDGET	FY 2018 YTD SPEND	REMAINING BALANCE	YTD Spend % (Current Budget)
110	INCIDENTAL	127,603,082	127,615,917	31,078,956	96,536,961	24.35%
111	Deseg Transfer 110	1,930,351	1,952,932	377,838	1,575,094	19.35%
112	Deseg Transfer 120	1,789,703	1,789,703	497,719	1,291,984	27.81%
120	TEACHERS FUND	159,339,874	159,328,097	36,307,569	123,020,528	22.79%
140	STUDENT HEALTH FUND	4,612,020	4,612,020	294,512	4,317,507	6.39%
360	CAPITAL EQUIPMENT	1,891,200	1,891,200	1,183,833	707,367	62.60%
510	SCHOOL LUNCHROOM	16,320,007	16,332,767	3,502,686	12,830,082	21.45%
610	DEBT SERVICE	29,629,423	29,629,423	4,125,074	25,504,349	13.92%
	*SAB Adopted Funds	343,115,660	343,152,059	77,368,187	265,783,872	22.55%
220	EARLY CHILDHOOD SPEC	7,525,276	7,226,974	1,465,022	5,761,953	20.27%
230	TITLE I IASA	1,066,000	5,534,175	3,507,698	2,026,477	63.38%
240	ADULT VOCATION/ACAD	-	1,124,759	135,044	989,714	12.01%
250	ADULT BASIC ED 1999-	2,908,675	2,616,371	645,171	1,971,200	24.66%
260	COMM DEVELOP AGENCY	85,000	50,000	12,462	37,538	24.92%
270	PL 94-142 SPEC ED 09	9,800,000	7,438,478	955,034	6,483,444	12.84%
290	MINI FEDERAL PROG 19	20,887,587	4,632,691	891,352	3,741,340	19.24%
620	TITLE VI 1999-00	2,722,542	2,051,542	542,321	1,509,220	26.43%
	*Special Revenue Funds	44,995,080	30,674,989	8,154,103	22,520,887	26.58%
720	TRUST AGENCY & ENTER	179,345	219,675	47,763	171,911	21.74%
730	FOUND CONTRI INCID 9	3,024,147	1,978,328	502,948	1,475,380	25.42%
	*Self Funding Funds	3,203,492	2,198,003	550,711	1,647,292	25.06%
	**BUDGETED FUNDS	391,314,232	376,025,051	86,073,001	289,952,050	22.89%

* Special Revenue Fund amounts are estimates based upon grant application amount. The actual amounts received for each respective grant may vary from budgeted amount and are fully disclosed in the District's Comprehensive Annual Financial Report. Some grants include roll-forward amounts from prior year.

** Funds from DESEG Settlement have been deposited in DESEG Capital (Fund 331) and are allocated out to DESEG Expansion (Funds 111, 112, and 113) in accordance with settlement plan spend down schedule.

St. Louis Public Schools
Balance Sheet – Governmental Funds
For The Period Ended October 31, 2017

	General	Teachers	Debt Service	Building	DESEG Vocation Ed (321)	DESEG Settlement (331)	Non-Major Governmental Funds (Non-Majors Tab)	Total Governmental Funds
ASSETS								
Cash and Investments								
Cash and Investments	24,955,440	(20,108,275)	4,677,071	(1,155,023)	521,146	3,559,621	9,282,319	21,732,300
Investments held for Bond Indebtedness	-	-	17,123,664	-	-	-	-	17,123,664
Total Cash and Investments	24,955,440	(20,108,275)	21,800,735	(1,155,023)	521,146	3,559,621	9,282,319	38,855,964
Receivables								
Receivables - Grants	-	-	-	-	-	-	9,768,230	9,768,230
Receivables - Taxes	13,226,664	-	2,041,148	-	-	-	-	15,267,812
Receivables - Other	672,248	-	-	42,430	-	-	664,959	1,379,637
Total Receivables	13,898,912	-	2,041,148	42,430	-	-	10,433,189	26,415,679
Due from other Funds	201,297,106	189,901,412	-	-	-	-	-	391,198,517
Prepaid assets	-	-	-	-	-	-	-	-
Inventories	-	-	-	-	-	-	-	-
Provision for retirement of LT Debt	-	-	-	-	-	-	-	-
Total Other Assets	201,297,106	189,901,412	-	-	-	-	-	391,198,517
TOTAL ASSETS	240,151,457	169,793,137	23,841,883	(1,112,593)	521,146	3,559,621	19,715,508	456,470,160
LIABILITIES AND FUND BALANCES								
LIABILITIES								
Accounts Payable	411,489	5,792,606	-	-	-	-	116,539	6,320,635
Retainage Payable	-	-	-	25,170	-	-	-	25,170
Claims Payable	-	-	-	-	-	-	-	-
Loan Payable	-	-	-	-	-	-	-	-
Accrued Vacation Liability	-	-	-	-	-	-	-	-
Other Accrued Liabilities	-	-	-	-	-	-	(0)	(0)
Due to Other Funds	189,901,412	182,429,056	-	-	-	-	18,868,049	391,198,517
Deposits and Escrow Funds	-	-	-	-	-	-	-	-
Due to other funds Unearned Revenue	-	-	-	-	-	-	5,471,212	5,471,212
Deferred Tax Revenue	13,226,664	-	2,041,148	-	-	-	-	15,267,812
TOTAL LIABILITIES	203,539,565	188,221,663	2,041,148	25,170	-	-	24,455,800	418,283,345
FUND BALANCES								
Nonspendable								
Inventories	-	-	-	-	-	-	-	-
Permanent Fund Principal (Fund 72)	-	-	-	-	-	-	-	-
Total Nonspendable	-	-	-	-	-	-	-	-
Restricted for :								
Bonded Indebtedness								
Capital Projects	-	-	-	-	-	-	-	-
Desegregation settlement programs	-	-	-	-	-	-	-	-
Total Restricted	-	-	-	-	-	-	-	-
Assigned to :								
School lunchroom								
Community Development Agency	-	-	-	-	-	-	-	-
Adult education	-	-	-	-	-	-	-	-
Total Assigned	-	-	-	-	-	-	-	-
Unassigned	36,611,893	(18,428,526)	21,800,735	(1,137,763)	521,146	3,559,621	(4,740,292)	38,186,815
Total Fund Balances	36,611,893	(18,428,526)	21,800,735	(1,137,763)	521,146	3,559,621	(4,740,292)	38,186,815
TOTAL LIABILITIES AND FUND BALANCES	240,151,457	169,793,137	23,841,883	(1,112,593)	521,146	3,559,621	19,715,508	456,470,160

St. Louis Public Schools
Statement of Revenues, Expenditures and Changes in Fund Balances – Governmental Funds
For The Period Ended October 31, 2017

	General Fund (110,111)	Teachers Fund (120,112)	Debt Service (610)	Building (360,113)	DESEG Vocation Ed (321)	DESEG Settlement (331)	Non-Major Governmental Funds (Non-Majors Tab)	Total Governmental Funds
REVENUES								
Local								
Current Taxes	5,039,706	8,184,263	4,088	-	-	-	-	13,228,057
Delinquent Taxes	1,697,087	-	252,244	-	-	-	-	1,949,332
Interest on Investments	114,632	-	21,251	3,570	1,240	-	7,521	148,214
Other	204,495	-	-	42,500	-	-	415,419	662,413
Local Total	7,055,920	8,184,263	277,583	46,070	1,240	-	422,940	15,988,016
County	-	33,349	-	-	-	-	-	33,349
State	4,122,588	10,078,792	-	-	-	-	142,722	14,344,102
Federal	95,255	80,359	-	-	-	-	4,502,520	4,678,133
TOTAL REVENUES	11,273,763	18,376,763	277,583	46,070	1,240	-	5,068,181	35,043,600
EXPENDITURES								
Current :								
Instructional	3,627,257	28,660,924	-	-	-	-	4,196,325	36,484,506
Building Services	10,595,607	48,735	-	1,169,354	-	-	-	11,813,696
Administration	5,540,496	3,964,955	-	-	-	-	17,478	9,522,929
Instructional Support	3,695,172	2,542,214	-	-	-	-	2,361,762	8,599,149
Non-Instructional Support	5,317,096	298,244	-	102	-	-	193,955	5,809,396
Transportation	1,658,743	-	-	-	-	-	184,870	1,843,614
Food and Community Services	945,903	1,290,216	-	-	-	-	5,474,010	7,710,129
Total Current Expenditures	31,380,274	36,805,288	-	1,169,456	-	-	12,428,400	81,783,419
Capital Outlay	76,520	-	-	14,377	-	-	73,612	164,508
Debt Service	-	-	-	-	-	-	-	-
Bond Principal Retirement	-	-	-	-	-	-	-	-
Bond Interest Expense	-	-	4,125,074	-	-	-	-	4,125,074
Bond Issuance Costs	-	-	-	-	-	-	-	-
Total Expenditures	31,456,794	36,805,288	4,125,074	1,183,833	-	-	12,502,012	86,073,001
Excess (Deficiency) Revenue - Expense	(20,183,031)	(18,428,526)	(3,847,491)	(1,137,763)	1,240	-	(7,433,831)	(51,029,401)
Other Financing Sources (Uses)								
Transfers In	3,234,878	-	-	-	-	-	-	3,234,878
Transfers out	-	-	-	-	-	(3,234,878)	-	(3,234,878)
Issuance of Bonds	-	-	-	-	-	-	-	-
Payment to refunding escrow agent	-	-	-	-	-	-	-	-
Premium on issuance of bonds	-	-	-	-	-	-	-	-
Total Other Financing Sources (Uses)	3,234,878	-	-	-	-	(3,234,878)	-	-
Net Change in Fund Balances	(16,948,153)	(18,428,526)	(3,847,491)	(1,137,763)	1,240	(3,234,878)	(7,433,831)	(51,029,401)
Fund Balances - Beginning of period	53,560,046	-	25,648,226	-	519,906	6,794,499	2,693,539	89,216,216
Fund Balances - End of Period	36,611,893	(18,428,526)	21,800,735	(1,137,763)	521,146	3,559,621	(4,740,292)	38,186,815